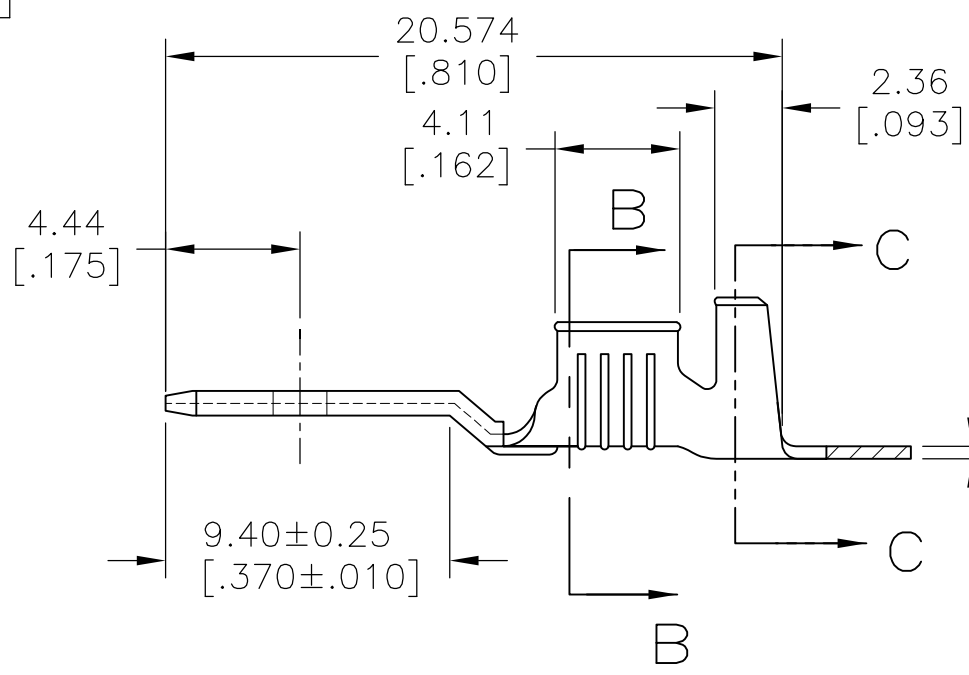
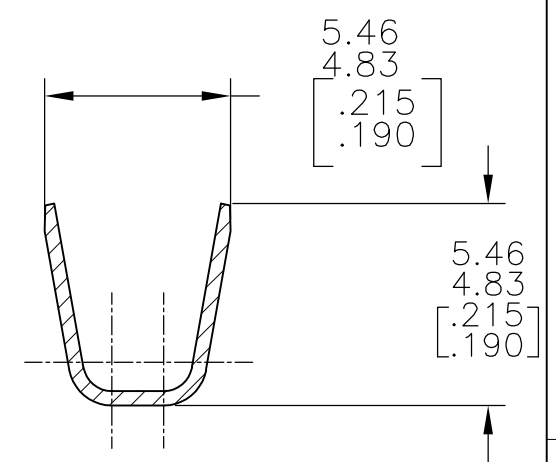
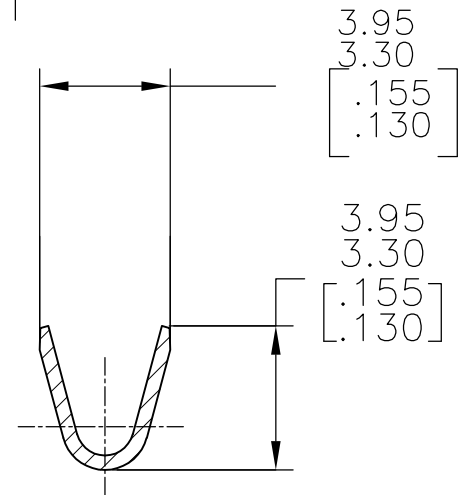
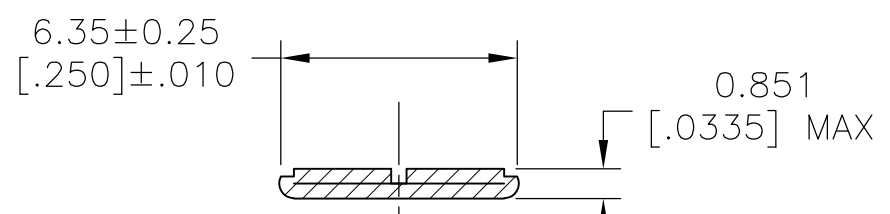
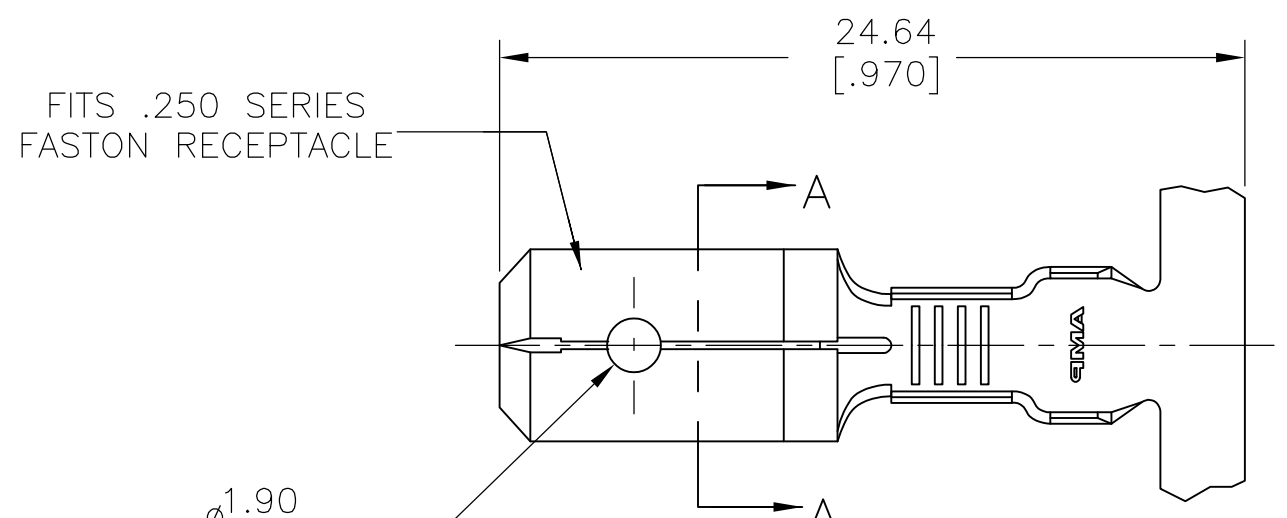


THIS DRAWING IS UNPUBLISHED. RELEASED FOR PUBLICATION  
 © COPYRIGHT - By - ALL RIGHTS RESERVED.

LOC	DIST	REVISIONS					
AF	50	P	LTR	DESCRIPTION	DATE	DWN	APVD
			V	REVISED PER ECR-13-011489	06DEC2013	KH	PD



6	4	TIN	2.794-3.81 [.110-.150] DIA	18-14 AWG	42474-7
5	-	42474-6			
5	SILVER .000120 MIN	42474-5			
4	TIN	42474-4			
3	-	42474-3			
5	TIN	42474-2			
FINISH			INSULATION RANGE	WIRE SIZE	PART NO

- 1 CONTINUOUS STRIP ON REELS.
- 2 FEED TO BE .540#.005.
- 3 REVERSED REEL OF 42474-1.
- 4 REVERSED REEL OF 42474-2.
- 5 FOREIGN PRODUCTION ONLY.
- 6 LUBRICANT APPLIED AFTER TIN PLATING.

THIS DRAWING IS A CONTROLLED DOCUMENT.		DWN	JR RUTH	1/31/91	<b>STE</b> TE Connectivity		
DIMENSIONS: mm [INCHES]		CHK	MS FEHER	1/31/91			
TOLERANCES UNLESS OTHERWISE SPECIFIED:		APVD	C MEYERS	1/31/91	NAME		
0 PLC ± -		PRODUCT SPEC		TAB, FASTON™ .250 SERIES			
1 PLC ± -		APPLICATION SPEC		SIZE	CAGE CODE	DRAWING NO	RESTRICTED TO
2 PLC ± -		MATERIAL		A300779		C-42474	-
3 PLC ± .015		FINISH		CUSTOMER DRAWING		SCALE	SHEET
4 PLC ± -		SEE TABLE		4:1		1 OF 1	REV
ANGLES ± -							V